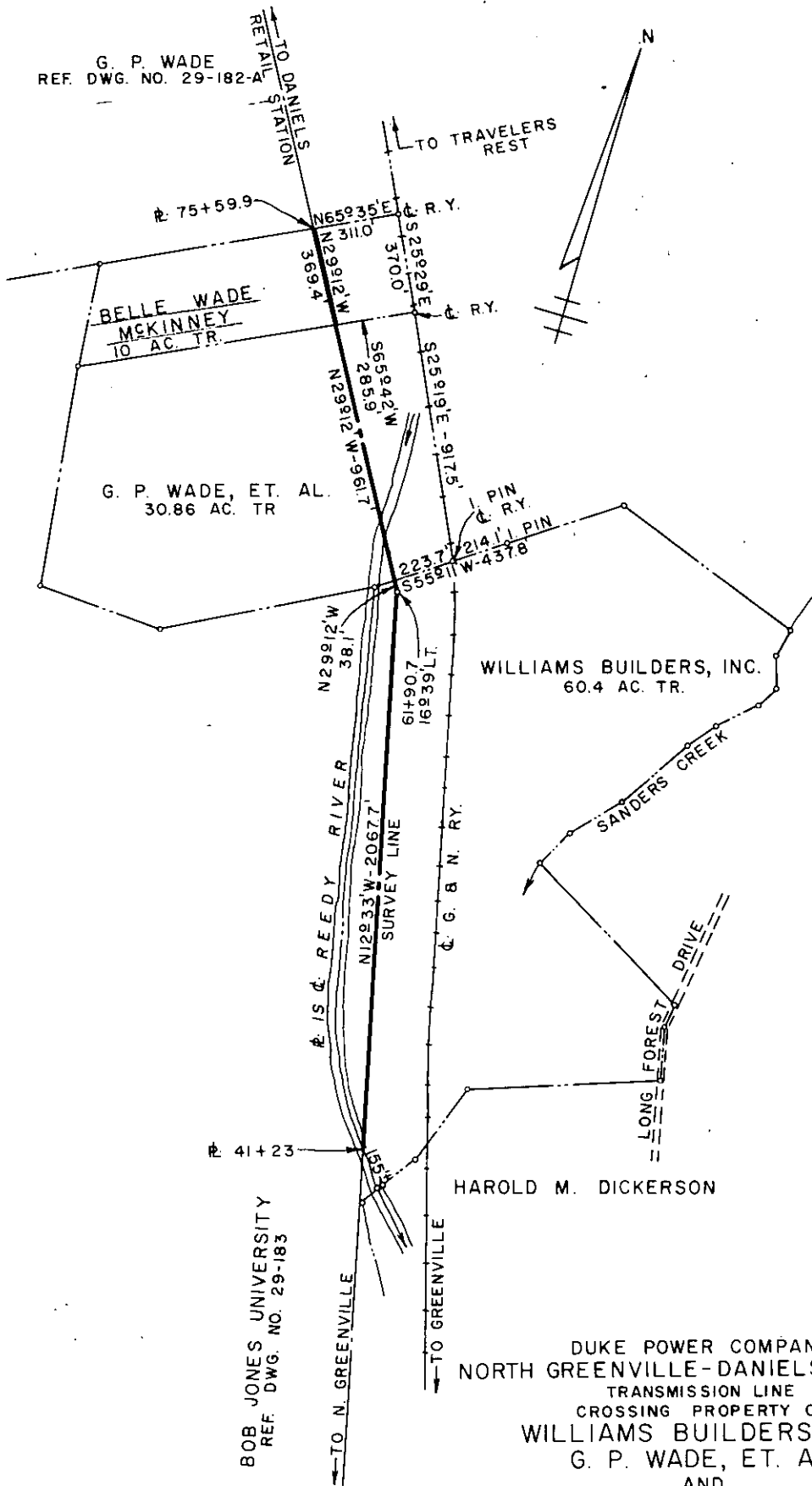


G. P. WADE  
REF. DWG. NO. 29-182-A



BOB JONES UNIVERSITY  
REF. DWG. NO. 29-183

DUKE POWER COMPANY  
NORTH GREENVILLE-DANIELS RETAIL  
TRANSMISSION LINE  
CROSSING PROPERTY OF  
WILLIAMS BUILDERS INC.,  
G. P. WADE, ET. AL.,  
AND  
BELLE WADE MCKINNEY  
PARIS MTN. TOWNSHIP  
GREENVILLE COUNTY, S.C.

Recorded July 28th., 1965 At 12:24 P.M.#

SCALE: 1" = 500'  
BOOK NO. 806  
APRIL 22, 1965  
FILE NO. 29-182